

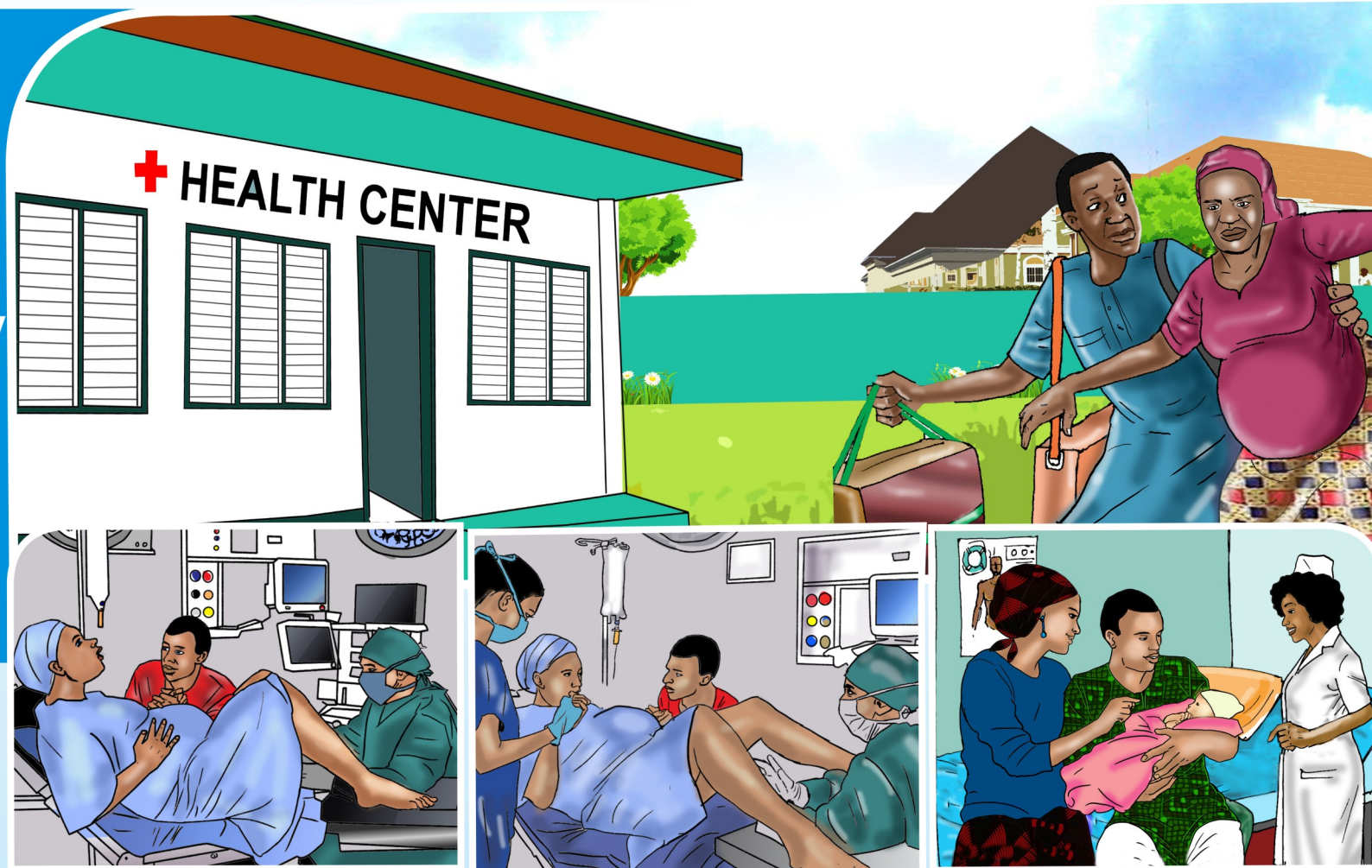
Fathers contribute to Healthy Families

STAGE 3

LABOUR AND DELIVERY

A Father/Partner should:

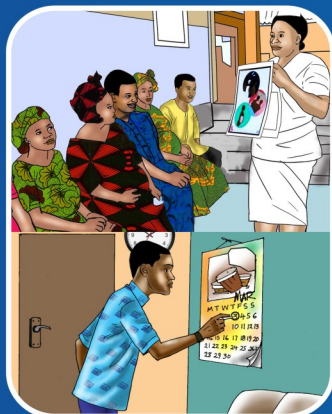
- Go with his wife/partner to the health facility when she is in labor if she chooses, to provide her with all necessary support she may need to deliver a healthy baby under the care of a trained health provider.



Stage 1



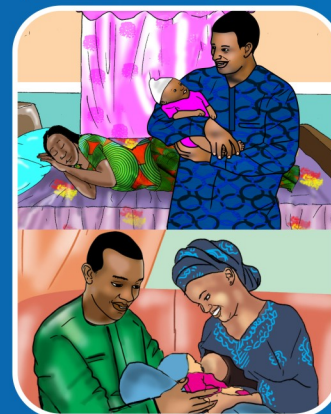
Stage 2



Stage 3



Stage 4



Stage 5



USAID
FROM THE AMERICAN PEOPLE

**Maternal and Child
Survival Program**