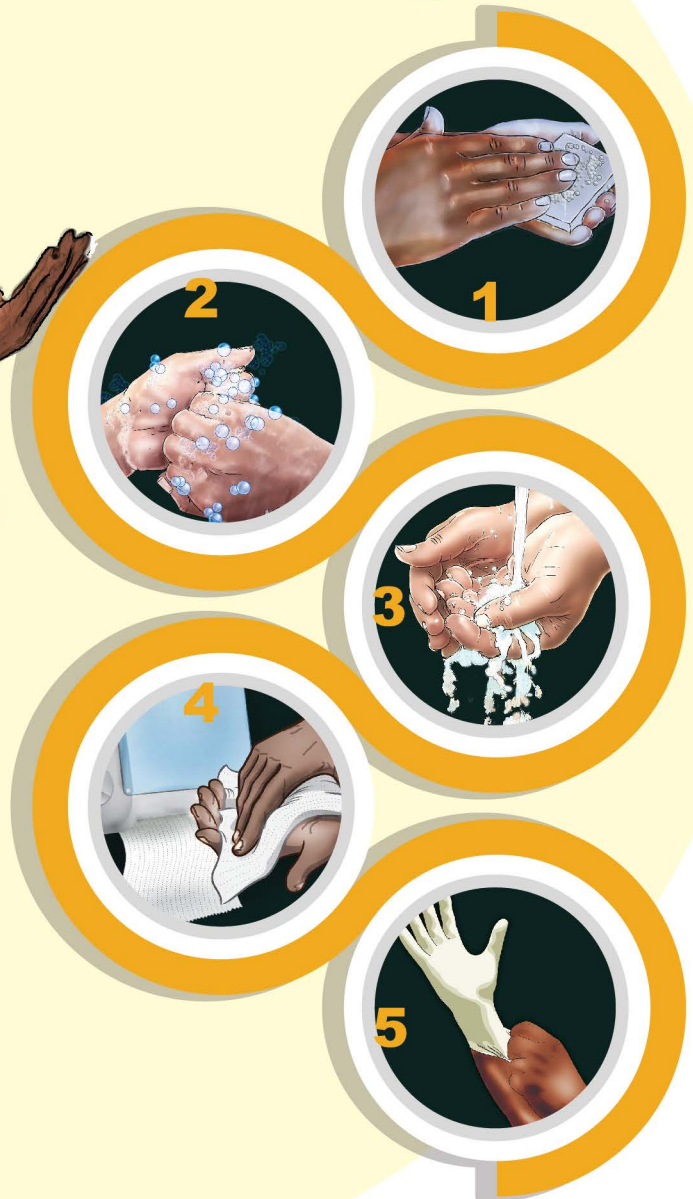


# SAVE A LIFE.

Wash your hands with soap and water, and then put on new sterile gloves between patients and before conducting any invasive procedure.



## Invasive and Risky Procedures

- Vaginal examinations
- Insertion of IV cannula
- Manual removal of the placenta
- Manual removal of blood clots
- Switching between patients
- Insertion of urine catheter
- Artificial rupture of membranes
- Cord tie / clamping
- Cord contact



**USAID**  
FROM THE AMERICAN PEOPLE

Maternal and Child  
Survival Program